



Big Island
(Boyd Island/Chiminish)
Dark Sky Preserve

A Proposal

RASC Dark-Sky Program™

Component of Light Pollution Abatement Program

Key components of RASC Dark-Sky Program:

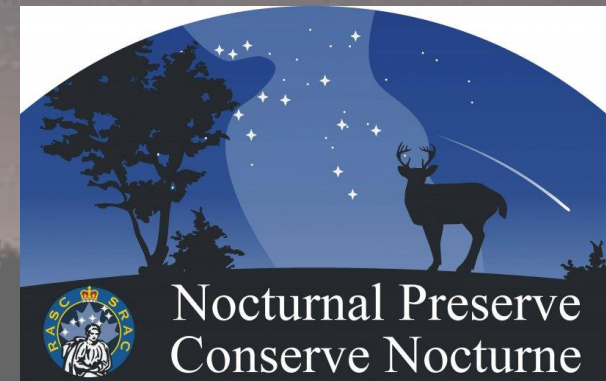
- control of local lighting;
- outreach programs aimed at the general public and neighbouring municipalities;
- demonstrate good nighttime lighting practices.



ROYAL
ASTRONOMICAL
SOCIETY
OF CANADA

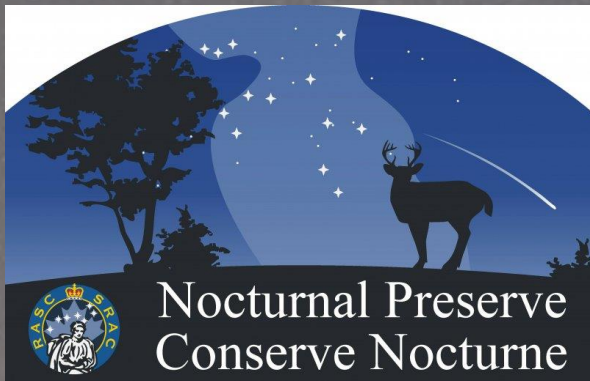
Dark-Sky Preserves™, Urban Star Parks™ and Nocturnal Preserves™

“The three designations reflect the benefit for outreach programs of readily accessible sites within or near urban areas and more remote dark sites for observing the pristine sky.”





- No artificial lighting visible.
- Educate/promote reduction of light pollution.
- Sky glow comparable intensity, or less, to that of natural sky glow.



- Artificial lighting strictly controlled.
- Educate/promote reduction of light pollution.
- Primary focus: protect nighttime environment.
- Astronomical access is not a prerequisite.



- Artificial lighting is strictly controlled.
- Educate/promote the reduction of light pollution.
- Sky glow may be visible to observers within area, but skies still usable for astronomy.

RASC Dark-Sky Program Sites



APPLICATION REQUIREMENTS

Preserve Nomination Documentation List (1 of 2)

- Statement of compliance to Guidelines for Outdoor Lighting
- Location & Description of proposed Preserve
- Zenith sky quality measurements (locate reading on map)
- Public outreach plan (education)
- Municipal outreach plan

APPLICATION REQUIREMENTS

Preserve Nomination Documentation List (2 of 2)

- Existing light fixture inventory (lighting audit)
- Lighting plan
- Images of observing sites taken during day & night
- Memorandum of Understanding between partners
- Letters of support and commitment from neighbouring municipalities

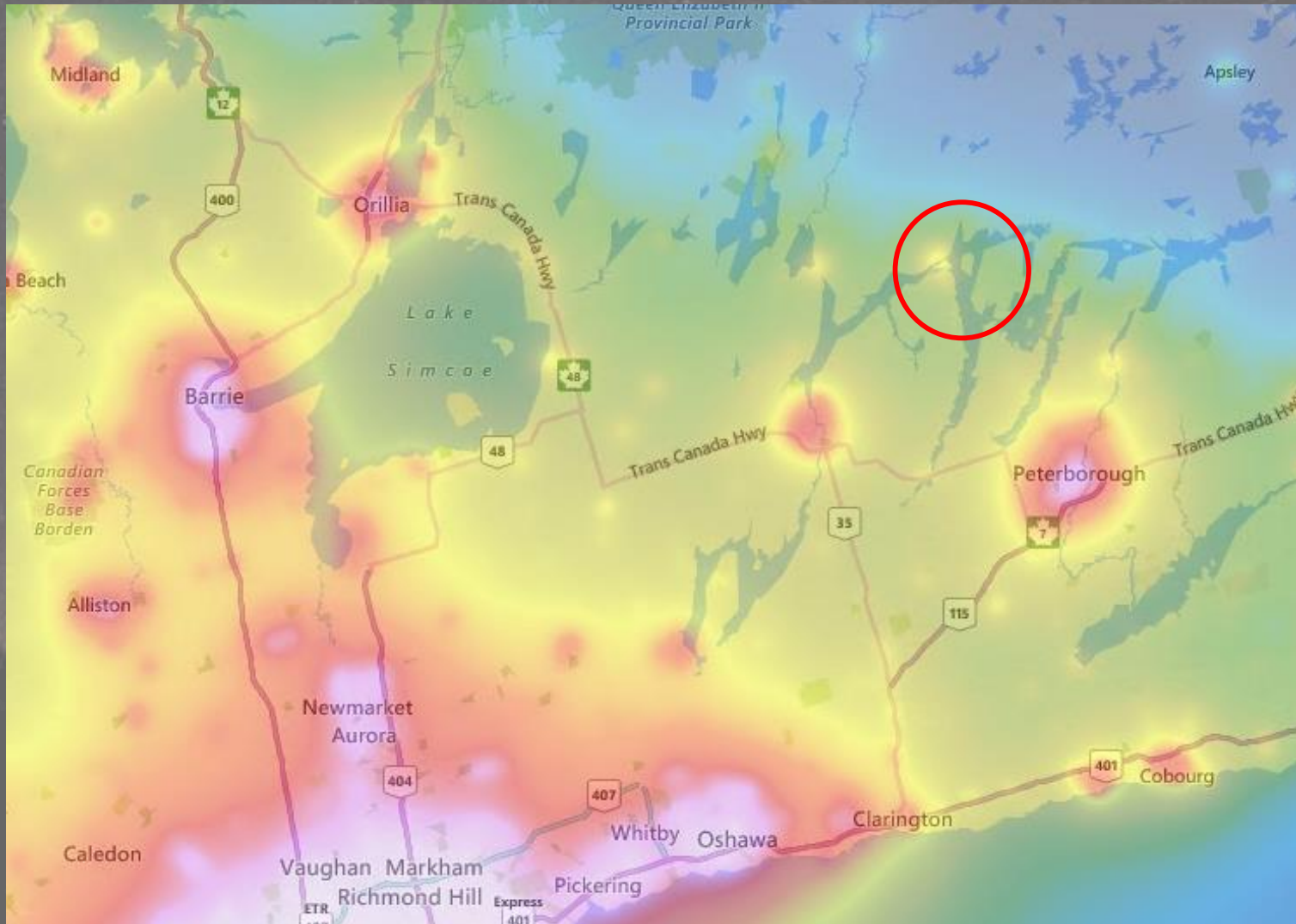
Potential Partner

Peterborough Astronomical Association

- Sky Quality Meter (SQM) Readings
- Application Process
- Public Outreach
- Municipal Outreach



Light Pollution Map



Source: www.lightpollutionmap.info

Proposed Next Steps...

- KLT approval to proceed
- Ecological Gifts Program notification/approval
- Approach PAA to discuss potential partnership
- Develop MOU with PAA
- Field visit(s) in Spring/Summer 2019/20
 - Sky Quality Measurements
 - Site Photos
- Solicit letters of support from local associations
- Joint KLT & PAA Delegations to MTL & COKL Councils
- Complete Application process

Long Term Commitments for KLT

- Public Education & Outreach
- Municipal Outreach
- Biennial Report to RASC